

# HYDRAULIC Pipe and Concrete Chainsaws

## 890F4 HYDRAULIC POWER (8gpm)

6 horsepower - 6ft-lbs torque - 2500 psi hydraulic supply - 20psi water supply - 2gpm water flow

## 890F4 HYDRAULIC POWER (12gpm)

8 horsepower - 10 ft-lbs torque - 2500 psi hydraulic supply - 20psi water supply - 2gpm water flow

**10", 15", 20" & 25"**  
**length available**

### 890F4



P/N	DESCRIPTION
566110	890F4 Hydraulic Powerhead 8 gpm/30 lpm, 1 ft/30 cm hose whips
566355	890F4 Hydraulic Powerhead 8 gpm/30 lpm, 8 ft/2.5 m hose whips
566112	890F4 Hydraulic Powerhead 12 gpm/45 lpm, 1 ft/30 cm hose whips
566116	890F4 Hydraulic Powerhead 12 gpm/45 lpm, 8 ft/2.5 m hose whips

### 890F4 FLUSH



P/N	DESCRIPTION
566113	890F4 Hydraulic Flush Cut Powerhead 8 gpm/30 lpm, 1 ft/30 cm hose whips
566351	890F4 Hydraulic Flush Cut Powerhead 8 gpm/30 lpm, 8 ft/2.5 m hose whips
566114	890F4 Hydraulic Flush Cut Powerhead 12 gpm/45 lpm, 1 ft/30 cm hose whips
566117	890F4 Hydraulic Flush Cut Powerhead 12 gpm/45 lpm, 8 ft/2.5 m hose whips

## **FORCE4** (CONCRETE) DIAMOND CHAIN

Designed to be the strongest, longest-lasting diamond chains ever made. The FORCE4 series delivers unrivaled performance in professional cutting applications. With eight different configurations, there is a FORCE4 chain to meet any cutting challenge.

## **PowerGrit XL** (PIPE) PIPE CUTTING CHAIN

Utilized by public and private water and wastewater departments worldwide, this patented technology exclusively from ICS is designed to cut a variety of materials from ductile iron to plastic pipe. Featuring a brazed layer diamond coating on our FORCE4 platform, this chain makes your job safer, faster and easier.

# POWER PACKS



**M300-23G-HPP**



**P95**

## SPECIFICATIONS

Dimensions	36in h, 21in w, 29in l / 91cm h, 53cm w, 74cm, l
Oil Flow	12 GPM at 2,300
Pressure	2300 PSI
Oil Reservoir	8 gallons / 30L steel reservoir
Weight	450lbs. / 204kg.
Fuel Capacity	4 gallon /15L steel fuel tank
Engine Manufacturer	Kohler
Cooling System	Air to oil and water to oil cooling systems

## SPECIFICATIONS

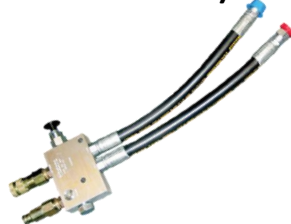
Dimensions	36in h, 23in w, 29in l / 91cm h, 58cm w, 75cm, l
Capacity	5gpm/19lpm   8gpm/30lpm
Pressure	2500 PSI
Hydraulic Reservoir	3 gallons /11L
Weight	330lbs. / 150kg.
Fuel Capacity	5.5 gallon /21L
Engine Manufacturer	Briggs & Stratton 18hp



## ACCESSORIES (Works with 890 saws)



**HYDRAULIC HOSE**  
25'

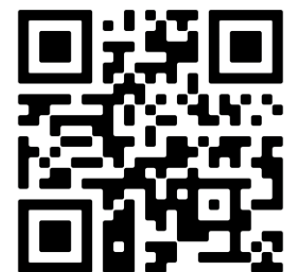


**FLOW ADAPTERS**  
8gpm & 12gpm



**PIPE CLAMP**  
up to 12"

SCAN FOR



2024 ICS/Merit Catalog